



2020-2021

NATIONAL SCHOOL BUS Loading and Unloading Survey



The Kansas State Department of Education School Bus Safety Unit wishes to thank the National Association of State Directors of Pupil Transportation Services for its assistance with this report.



The National School Bus Loading and Unloading Survey is a collection of fatality accident reports provided by state agencies that are responsible for school transportation and/or accident records.* The Kansas State Department of Education (KSDE), along with the help of the National Association of State Directors of Pupil Transportation Services, asks that all states and Washington, D.C., provide data to the agency, and then KSDE compiles it for this survey. Only fatalities involving school children in or around the loading or unloading areas of a school bus are included.

This survey is provided annually to the school transportation industry in an effort to raise awareness of the dangers involved in loading and unloading school children. Fatalities — which are caused by a variety of circumstances and errors by passing motorists and school bus drivers — continue to take place. This shows the continuing need for forceful, advanced instruction to school bus drivers and students, as well as the need to increase our efforts to thoroughly inform drivers across the country about the requirements of the school bus stop law.

The 2020-2021 National School Bus Loading and Unloading Survey is only available online. Please reproduce and utilize the survey data as desired.

It should be noted that schools across the United States and other countries are still struggling with the COVID-19 pandemic. This in turn decreased the number of students transported for the 2020-2021 school year.

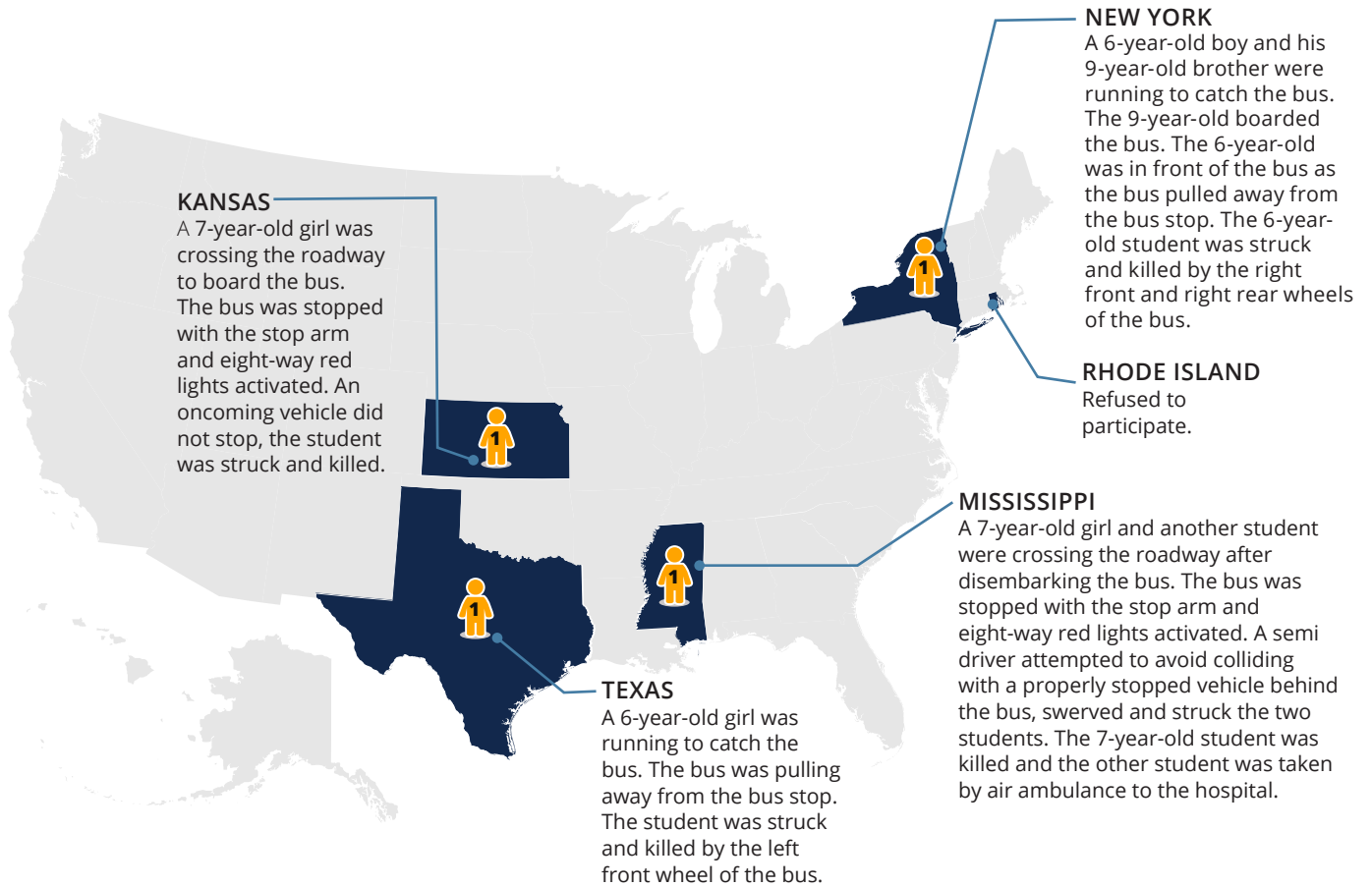
** Numbers are only as accurate as the reporting agency that provides them.*

2020-2021 NATIONAL SCHOOL BUS LOADING AND UNLOADING SURVEY

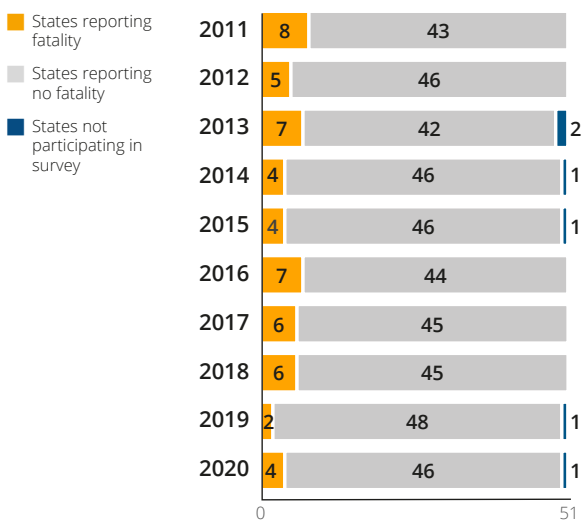
Contents

REPORTS OF FATALITIES BY STATE	5
Number of States Reporting Fatalities	5
10-Year Survey of Total Fatalities	5
Vehicle	6
School Buses vs. Other Vehicles	6
School Bus Type	6
Position of Child When Killed by School Bus	6
School Children Killed by Vehicle Passing School Bus	6
Objects Caught or Dropped	6
Destination	7
Location of Fatality	7
Age	8
Gender	8
Day of the Week Fatality Occurred	9
Month Fatality Occurred	9
Lighting Conditions	10
Weather Conditions	10
Weather-Related Road Conditions	10
Area Where Fatality Occurred	11
Road Type	11
51-YEAR SUMMARY	12
Age	12
School Buses vs. Other Vehicles	13
Destination	13

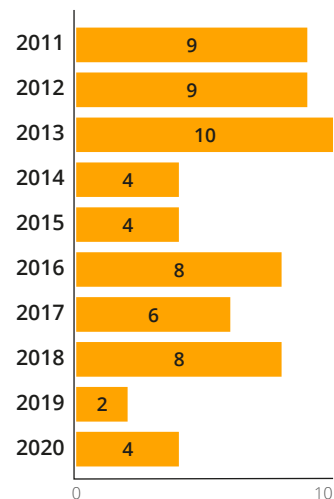
REPORTS OF FATALITIES BY STATE



Number of States Reporting Fatalities
50 States and Washington, D.C.

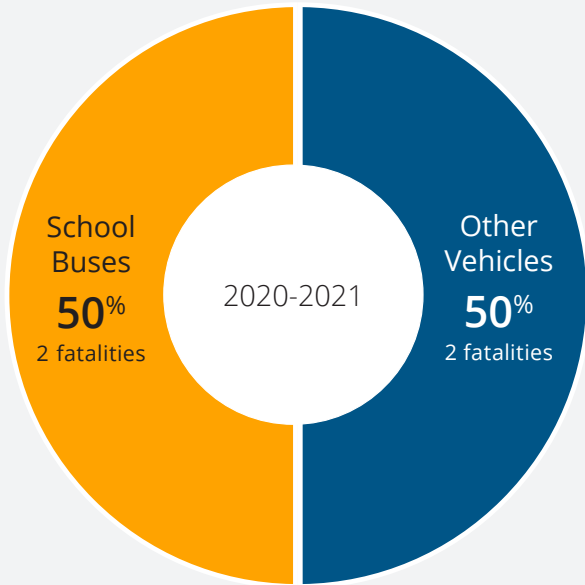


10-Year Survey of Total Fatalities
50 States and Washington, D.C.



Vehicle

School Buses vs. Other Vehicles

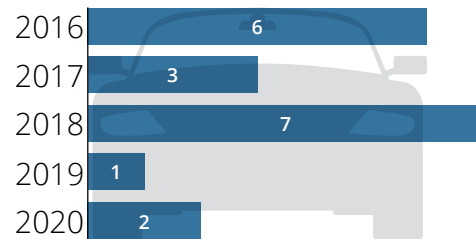


Fifty percent of fatalities were attributed to other vehicles during the 2020-2021 school year. Fifty percent were attributed to school buses during the same time period.

School Bus Type

Year	Type A	Type C	Type D	Total
2016		2		2
2017		2	1	3
2018		1		1
2019			1	1
2020		1	1	2

School Children Killed by Vehicle Passing School Bus



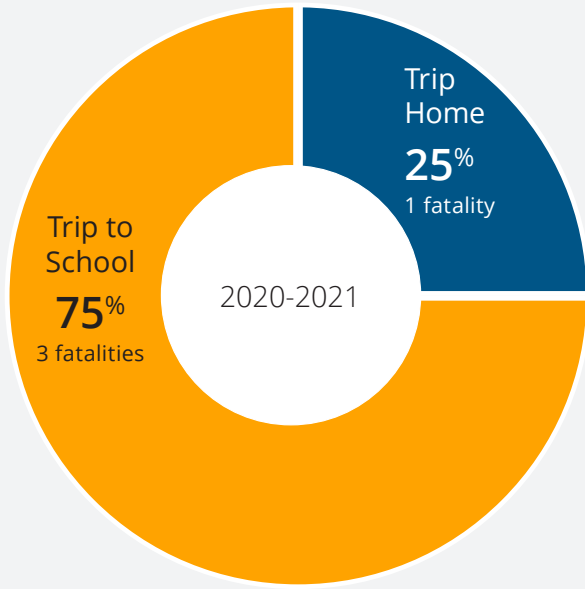
Position of Child When Killed by School Bus

Year	Back	Front	Total
2016	1	1	2
2017	2	1	3
2018	1		1
2019	1		1
2020	1	1	2

Objects Caught or Dropped

Year	Closed Door	Dropped Object	Total
2016	1		1
2017			0
2018			0
2019			0
2020			0

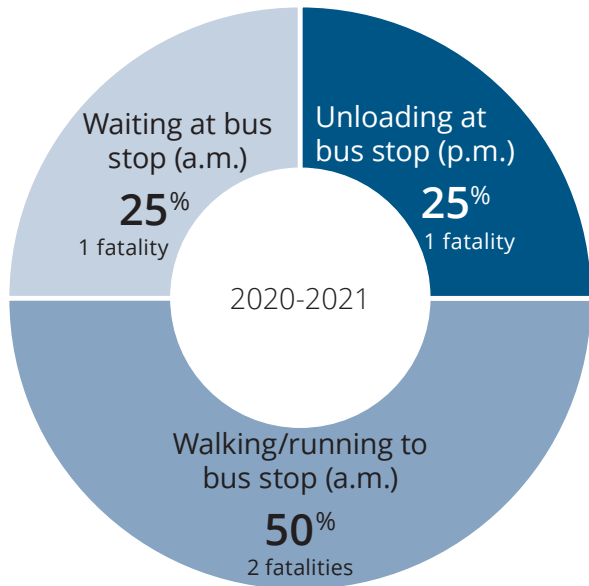
Destination



In 2020-2021, students traveling to school attributed to 75% of fatalities.

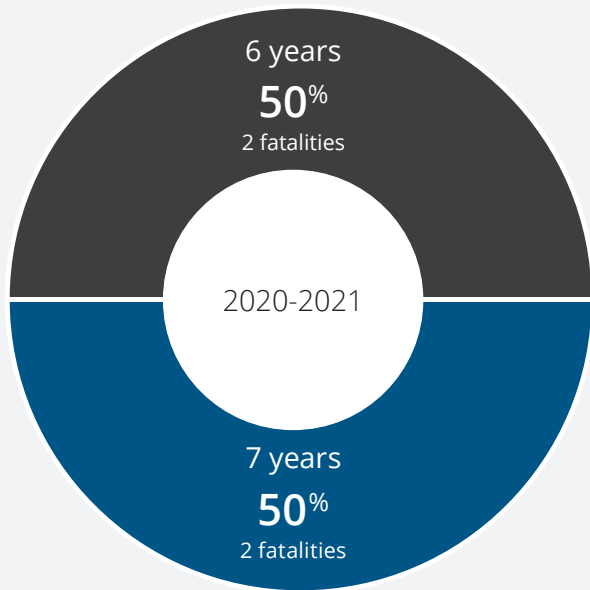
Year	Trip to School	Trip Home	Total
2016	4	4	8
2017	3	3	6
2018	7	1	8
2019	1	1	2
2020	3	1	4

Location of Fatality



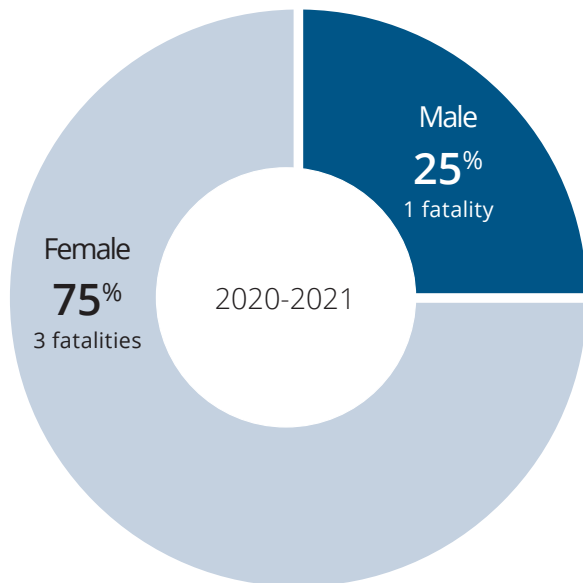
	SCHOOL BUS STOP				SCHOOL GROUNDS	TOTAL
	Walking/running to (a.m.)	Waiting (a.m.)	Unloading (p.m.)	Walking/running from (p.m.)	Loading (p.m.)	
2016	4		2	2		8
2017	3		2	1		6
2018	3	4			1	8
2019		1		1		2
2020	2	1	1			4

Age



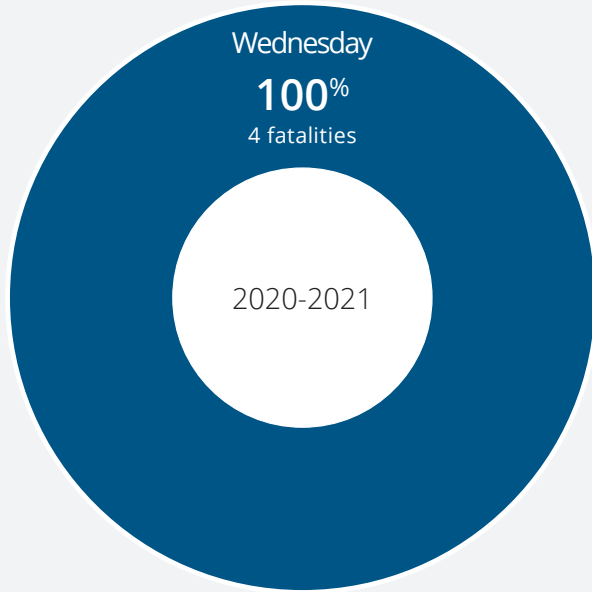
AGE	YEAR				
	2016	2017	2018	2019	2020
1					
2					
3					
4					
5					
6	2	1	3		2
7	3			1	2
8		2	1		
9	1		2	1	
10		1	1		
11	1				
12					
13					
14					
15		2			
16	1		1		
17					
Total	8	6	8	2	4

Gender



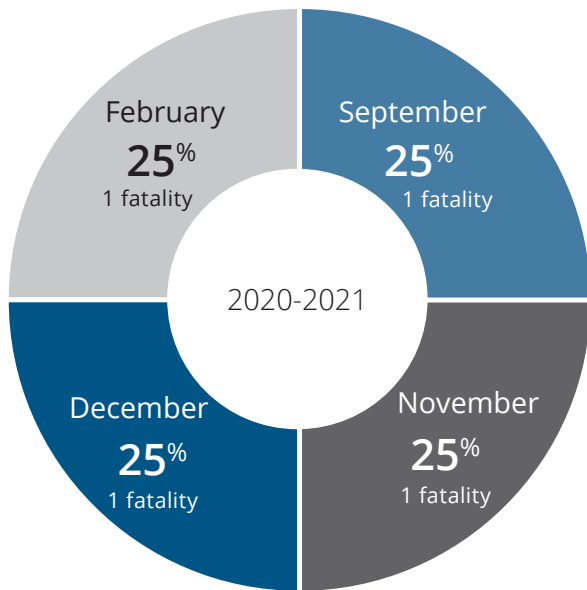
Year	Male	Female	Total
2016	4	4	8
2017	2	4	6
2018	5	3	8
2019		2	2
2020	1	3	4

Day of the Week Fatality Occurred



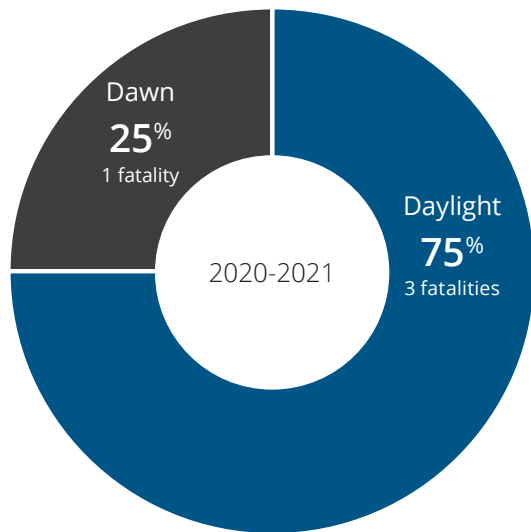
Year	Monday	Tuesday	Wednesday	Thursday	Friday	Total
2016	1	1		4	2	8
2017	1	2			3	6
2018	1	4	1	2		8
2019	1			1		2
2020			4			4

Month Fatality Occurred



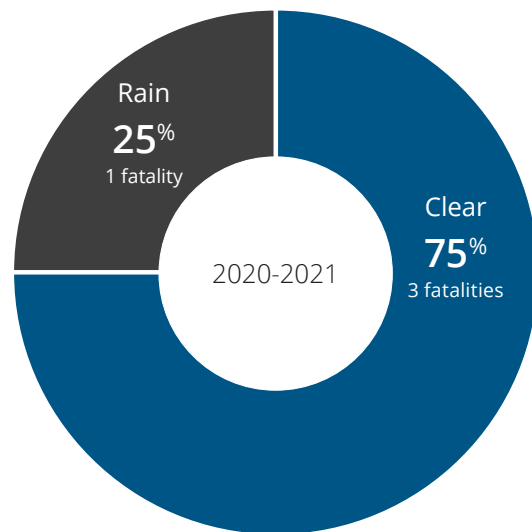
MONTH	YEAR				
	2016	2017	2018	2019	2020
Jan.					
Feb.	1	1		1	1
Mar.	3	1			
Apr.		2	1		
May					
Jun.					
Jul.					
Aug.					
Sept.			1		1
Oct.	3	1	6		
Nov.	1	1			1
Dec.				1	1
Total	8	6	8	2	4

Lighting Conditions



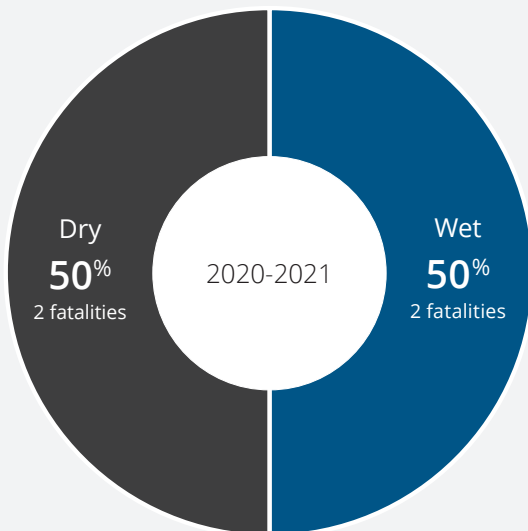
Year	Dawn	Daylight	Dark	Dusk	Total
2016		7	1		8
2017		5	1		6
2018	3	2	3		8
2019	1			1	2
2020	1	3			4

Weather Conditions



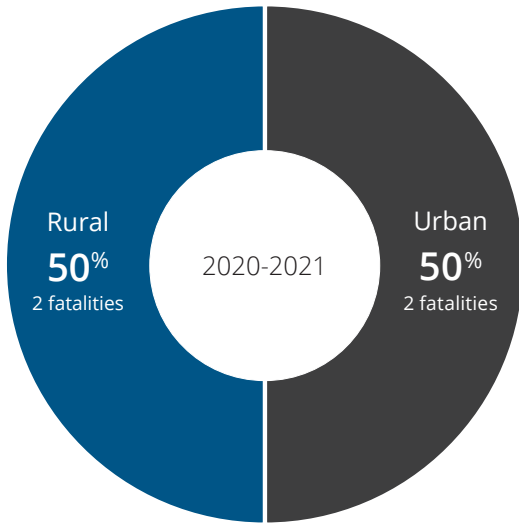
Year	Clear	Cloudy	Fog	Rain	Total
2016	7	1			8
2017	6				6
2018	7	1			8
2019	1		1		2
2020	3			1	4

Weather-Related Road Conditions



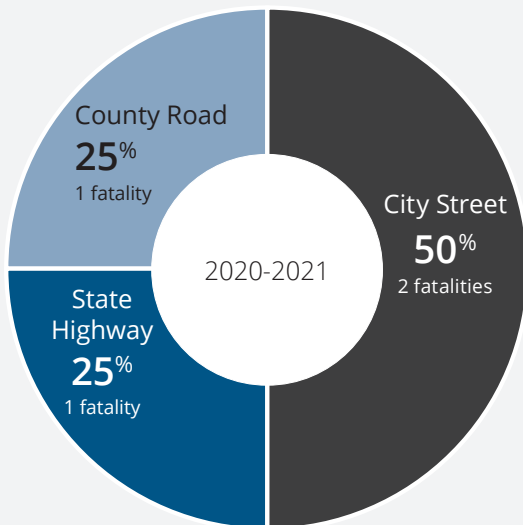
Year	Dry	Wet	Snow/Slush	Total
2016	7		1	8
2017	6			6
2018	8			8
2019	1		1	2
2020	2	2		4

Area Where Fatality Occurred



Year	Rural	Urban	Total
2016	7	1	8
2017	1	5	6
2018	6	2	8
2019	1	1	2
2020	2	2	4

Road Type



Year	City Street	State Highway	Federal Highway	County Road	Private Property	Total
2016	2	5	1			8
2017	5			1		6
2018		3		4	1	8
2019	1	1				2
2020	2	1		1		4

51-YEAR SUMMARY

Age

During the past 51 years, the largest percentage of fatalities, 73 percent (921 fatalities), occurred to students 9 years of age and younger.

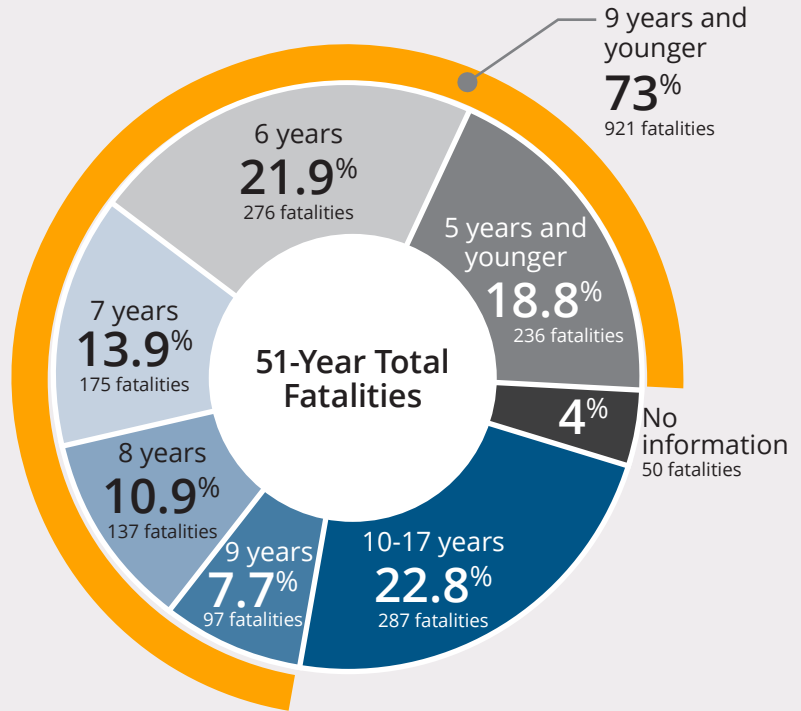
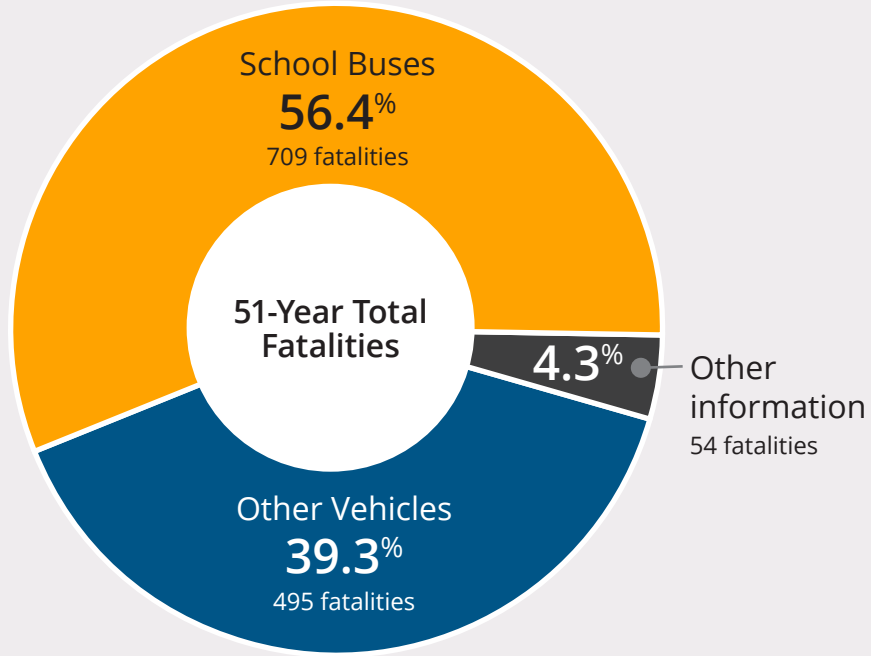


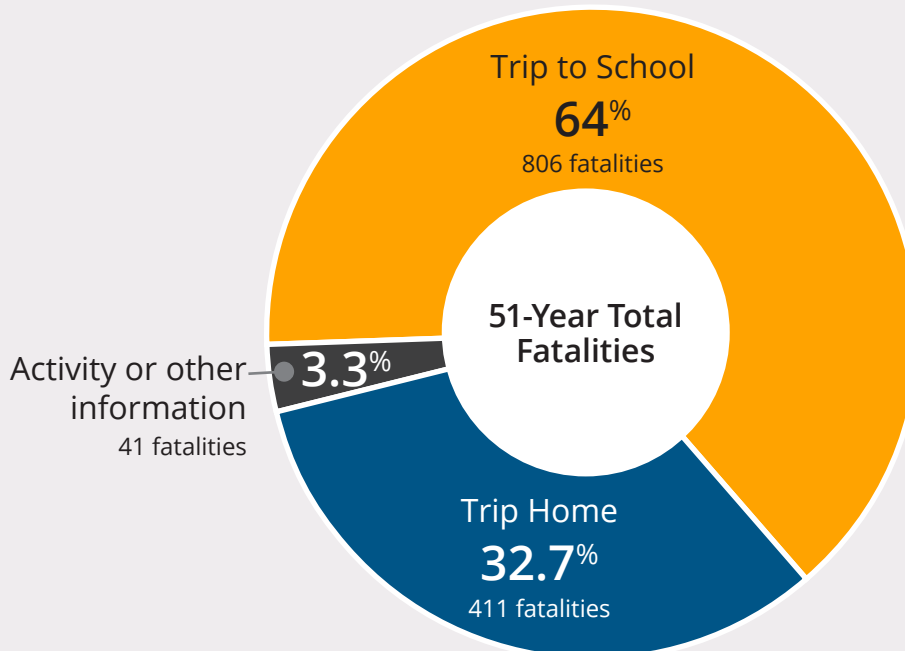
PHOTO CREDIT: Central Plains USD 112

51-Year Total Student Fatalities: 1,258

School Buses vs. Other Vehicles



Destination





KANSAS STATE BOARD OF EDUCATION

MISSION

To prepare Kansas students for lifelong success through rigorous, quality academic instruction, career training and character development according to each student's gifts and talents.

VISION

Kansas leads the world in the success of each student.

MOTTO

Kansans Can

SUCCESS DEFINED

A successful Kansas high school graduate has the

- Academic preparation,
- Cognitive preparation,
- Technical skills,
- Employability skills and
- Civic engagement

to be successful in postsecondary education, in the attainment of an industry recognized certification or in the workforce, without the need for remediation.

OUTCOMES

- Social-emotional growth measured locally
- Kindergarten readiness
- Individual Plan of Study focused on career interest
- High school graduation
- Postsecondary success

CHAIRMAN
DISTRICT 9

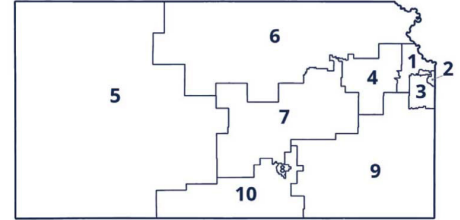


Jim Porter
jporter@ksde.org

VICE CHAIR
DISTRICT 1



Janet Waugh
jwaugh@ksde.org



DISTRICT 2



Melanie Haas
mhaas@ksde.org

DISTRICT 3



Michelle Dombrosky
mdombrosky@ksde.org

DISTRICT 4



Ann E. Mah
amah@ksde.org

DISTRICT 5



Jean Clifford
clifford@ksde.org

LEGISLATIVE LIAISON
DISTRICT 6



Dr. Deena Horst
dhorst@ksde.org

LEGISLATIVE LIAISON
DISTRICT 7



Ben Jones
bjones@ksde.org

DISTRICT 8



Betty Arnold
barnold@ksde.org

DISTRICT 10



Jim McNiece
jmcniece@ksde.org



KANSAS STATE DEPARTMENT OF EDUCATION

COMMISSIONER OF EDUCATION



Dr. Randy Watson

DEPUTY COMMISSIONER
Division of Fiscal and Administrative Services



Dr. S. Craig Neuenswander

DEPUTY COMMISSIONER
Division of Learning Services



Dr. Brad Neuenswander

900 S.W. Jackson Street, Suite 600
Topeka, Kansas 66612-1212

(785) 296-3203

www.ksde.org

April 27, 2021

For more information, contact:

School Bus Safety Unit
(785) 296-3551
kdreiling@ksde.org



Kansas State Department of Education
900 S.W. Jackson Street, Suite 102
Topeka, Kansas 66612-1212
www.ksde.org